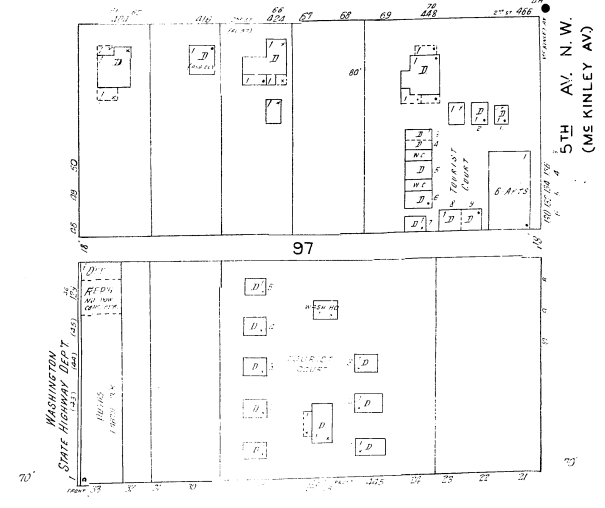
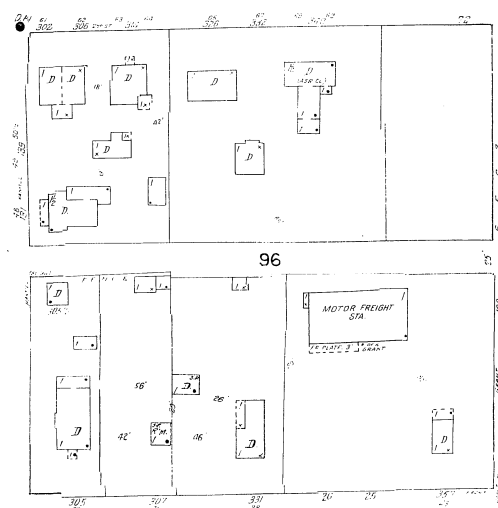
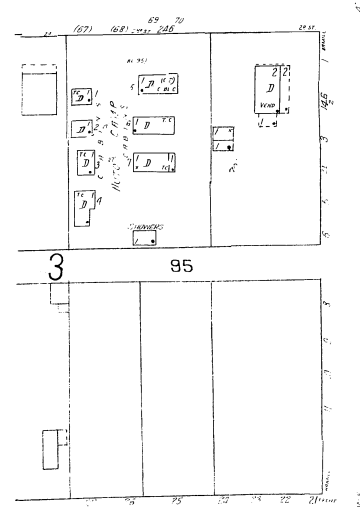
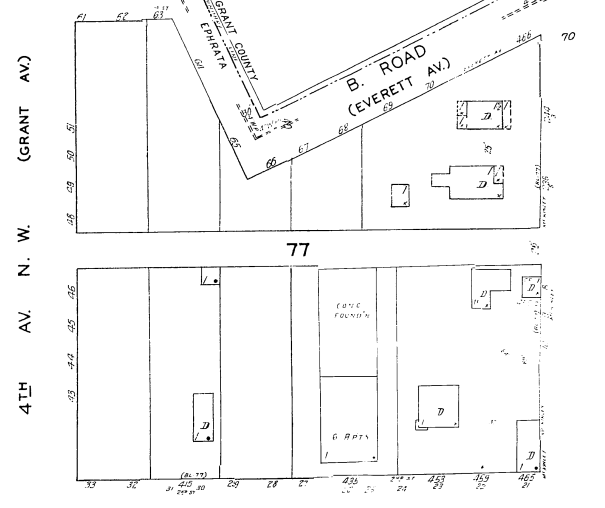
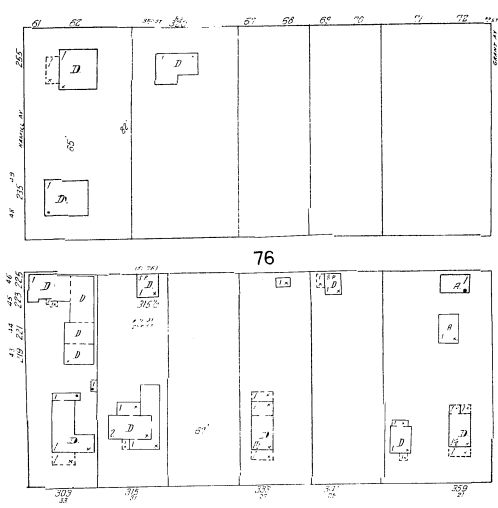
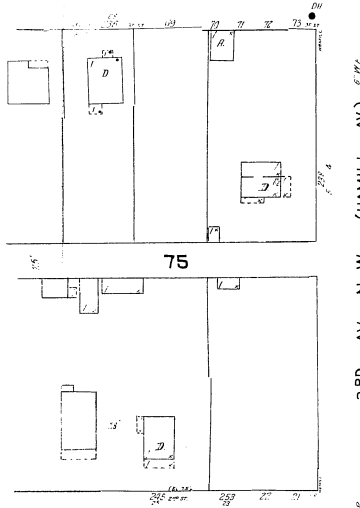
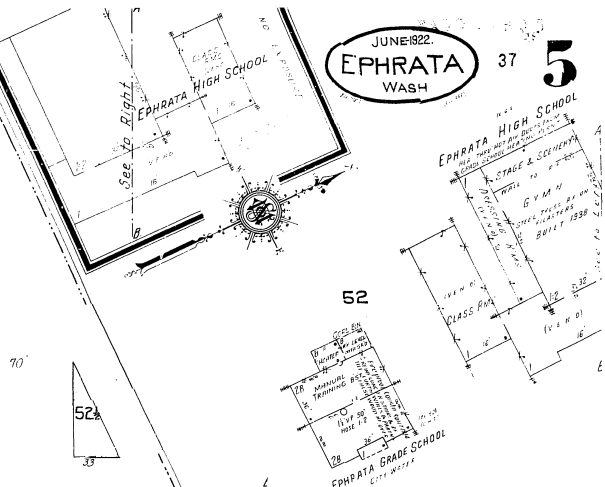
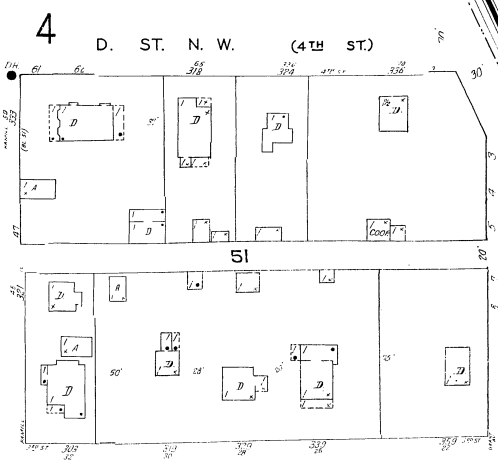
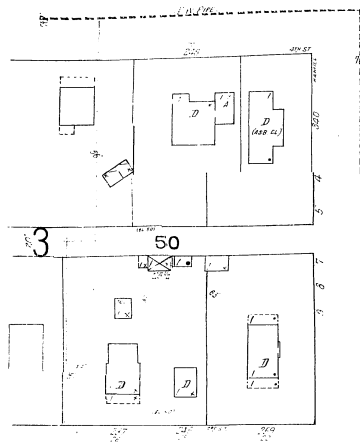


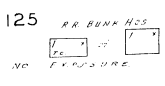
JUNE 1822.
EPHRATA
WASH

37 **5**

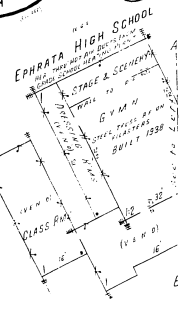


Scale of Feet
Copyright 1922 by The Standard Map Co.

A. ST. N. W. (FRONT)



126



GRANT AV. N. W. (GRANT AV.)

HAMILL AV. N. W.

B. ROAD (EVERETT AV.)

B. ST. N. W. (2ND ST.)

5TH AV. N. W. (MRS. KINLEY AV.)

MOTOR FREIGHT STA.

WASHINGTON STATE HIGHWAY UNIT